

We build it for you.

On-site waste conversion based on performance and ready for finance.

Pre-FID: Planning an On-Site Manure & Bedding Solution

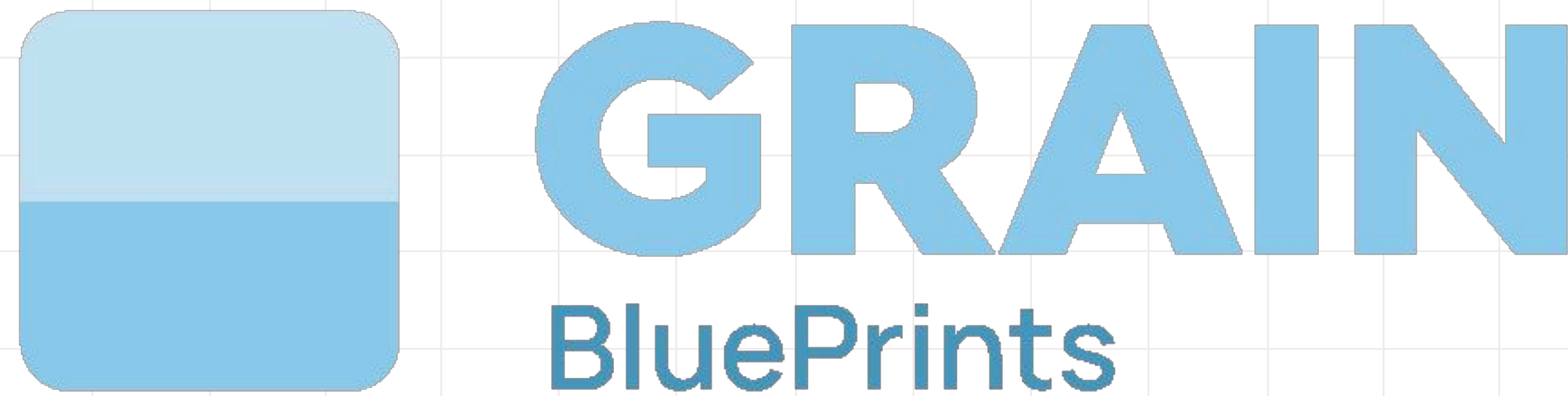
→ Project type: Kentucky Horse

Who this is for:

- Large equestrian facilities & public venues (horse parks, showgrounds, racetracks)
- State agencies & operators managing manure, bedding, and organic waste
- Infrastructure investors & lenders seeking de-risked, performance-contracted projects

Outcomes (what you leave with):

- A financeable, site-specific Blueprint to convert manure & bedding into biochar and soil products
- Validated unit economics incorporating current hauling, handling, and bedding costs
- Carbon removal pathway documentation aligned with Puro.earth / Isometric readiness
- Permitting, siting, and operations roadmap for on-site deployment
- A performance-based delivery model leveraging Schneider Electric advisory & contracting



Pre-FID Development as a Service (DaaS)

Turn your waste-to-value opportunity into a financeable, investor-ready project in 10–12 weeks.

The Grain Project Blueprint combines techno-economic modeling, carbon protocol alignment, permitting basis, vendor quotes, and an investor data-room pack — reducing your development risk by 60–80% and accelerating your path to funding.

From concept to capital-ready in 10–12 weeks.





Walter the Waste Manager

- Project development / facilities / sustainability lead
- Public-sector or quasi-public institution
- Highly experienced in operations, vendors, and cost controls

- Manages complex, multi-vendor waste and logistics systems
- Deep experience with hauling contracts and service providers
- Familiar with sustainability goals, but not a biochar or carbon markets expert
- Works across operations, finance, and external partners

Motivation: Company leadership has asked for supply chain resiliency, cost savings or cost-neutral sustainable initiatives

Important: MINIMAL RISK. PROVEN DELIVERY. CLEAR ROI.

→ Every year, the U.S. produces **~1 billion tons of organic waste** from forests, farms, and food factories.

→ Businesses **spend \$50 billion just to get rid of it.**

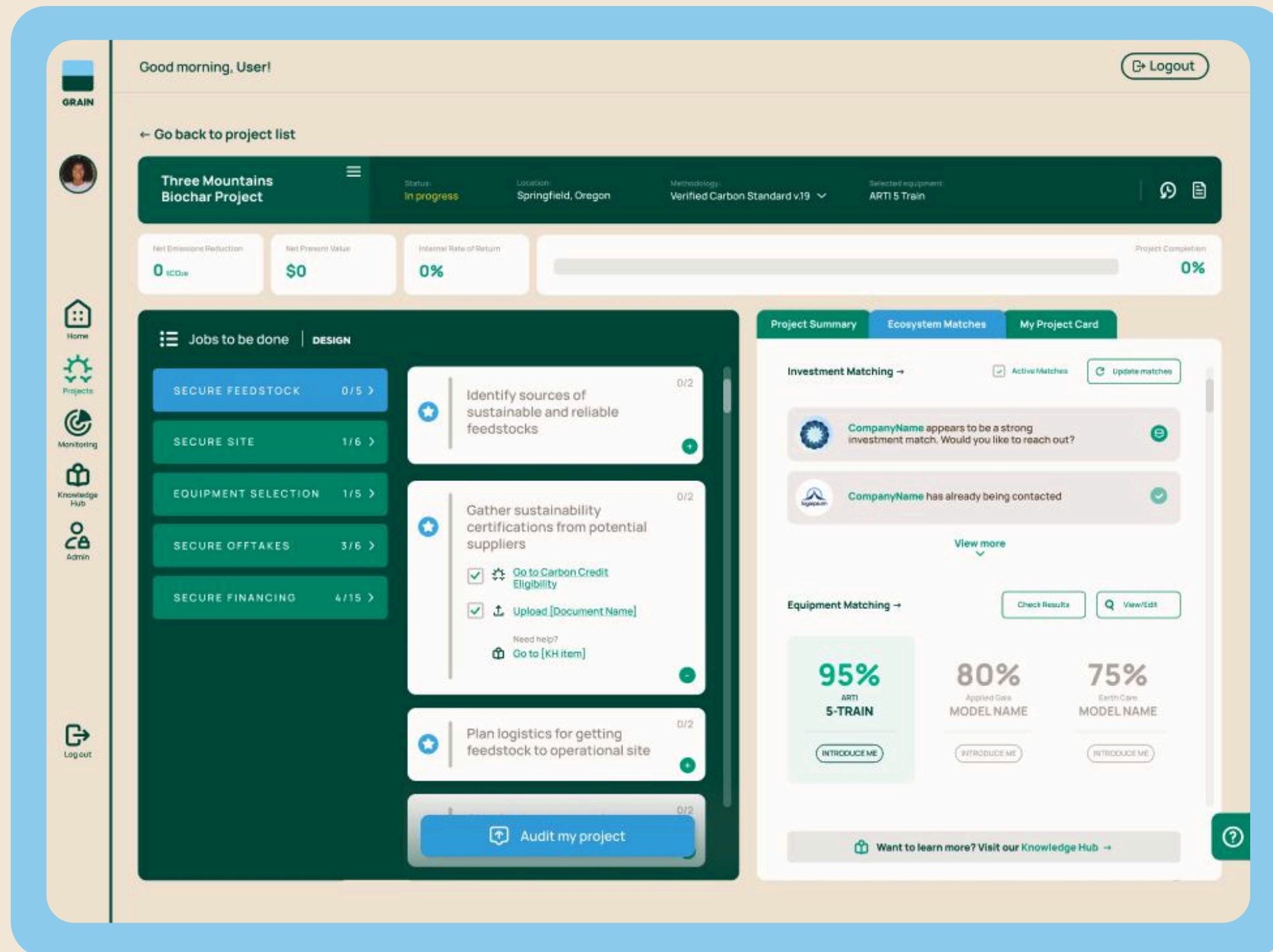


Turning waste costs into cash yield

* Illustrative persona: based on real patterns observed across Grain's projects.

THE SOLUTION

Grain Solution: On-Site Muck-to-Value Infrastructure (KHP)



Centralize one waste stream, without disrupting operations



Integrate with existing stall cleanout vendors (Curry, Brookside) while converting ~8,000 tons/year of manure and bedding on-site, avoiding off-site hauling dependency.

Reduce recurring waste OpEx and expansion risk



Materially lower exposure to hauling and handling costs (~\$525K-\$545K/year today) and prevent waste costs from scaling linearly as the facility expands.

Create new circular revenue streams



Produce biochar, recycled bedding (offsetting KHP spend and enabling exhibitor sales), and registry-ready carbon removal credits captured by KHP instead of third parties.

Delivered turnkey and performance-based



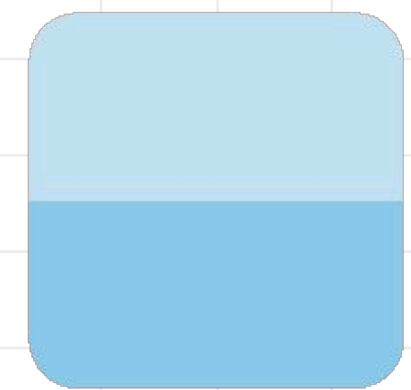
Grain designs, builds, and operates the system with Schneider Electric performance contracting and Grain's digital MRV—finance-ready, low-risk, and fully replicable across similar sites.

THE SOLUTION

The Ohio Heifer Center has successfully deployed Earthcare gasification technology, delivering significant ROI and demonstrating immediate, replicable value for the supply chain.



Pricing:



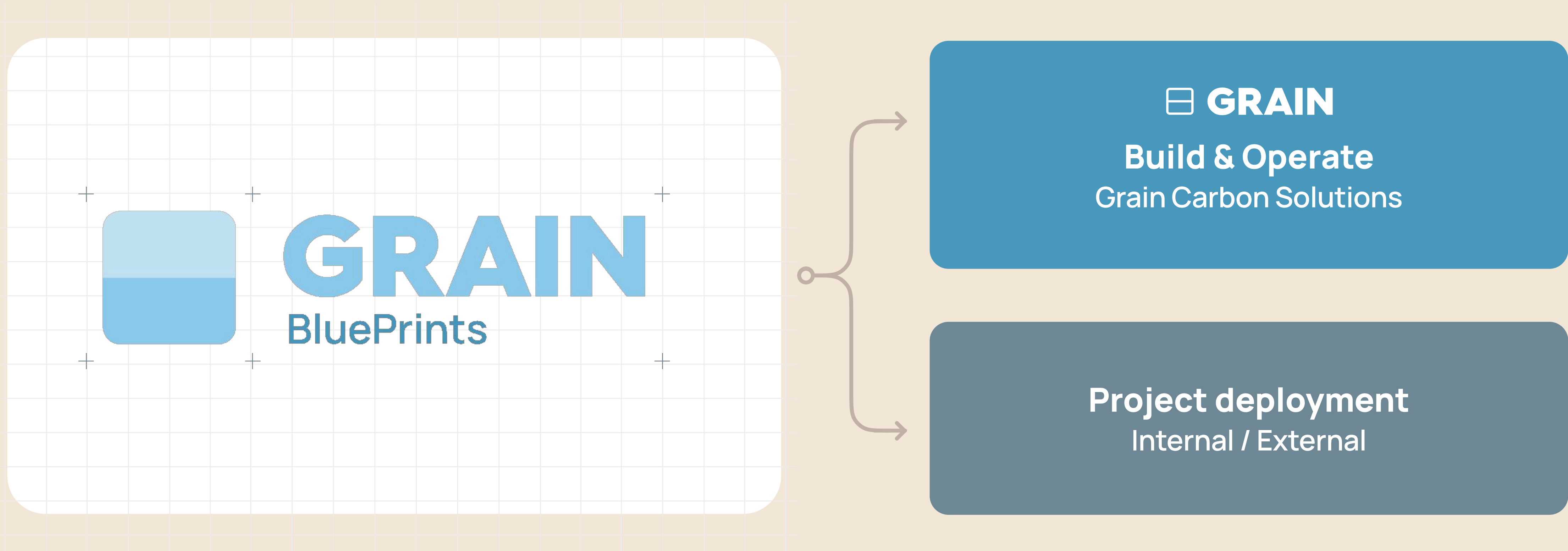
GRAIN
BluePrints

- A site-specific, finance-ready Blueprint to convert manure and bedding into biochar and soil products
- Validated cost and savings analysis, incorporating current hauling, handling, and bedding expenses
- Carbon pathway assessment aligned with Puro.earth / Isometric readiness (where applicable)
- Permitting, siting, and on-site operations roadmap for implementation at the Park
- A performance-based delivery approach focused on measurable operational outcomes

Total **\$75,000**

This engagement is designed to give the Park clear, decision-ready information before committing to capital or construction.

Next steps: Post Pre-FID



LEADERSHIP

OPERATOR



Ryan Letourneau
CEO

3x business builder

+10 years finance,
transformed \$2bn business



ENGINEER



Matt Boujonnier
CTO

25 years of AI, Data &
software development

5 patents



SALES



Jason Dodier
CCO

Secured \$100M+ in project
financing

Led annual sales of \$300m



CARBON



Alicia Klepfer
Carbon Expert

+10 years developing carbon
projects

Masters in Green
House Gas Accounting



FINANCE



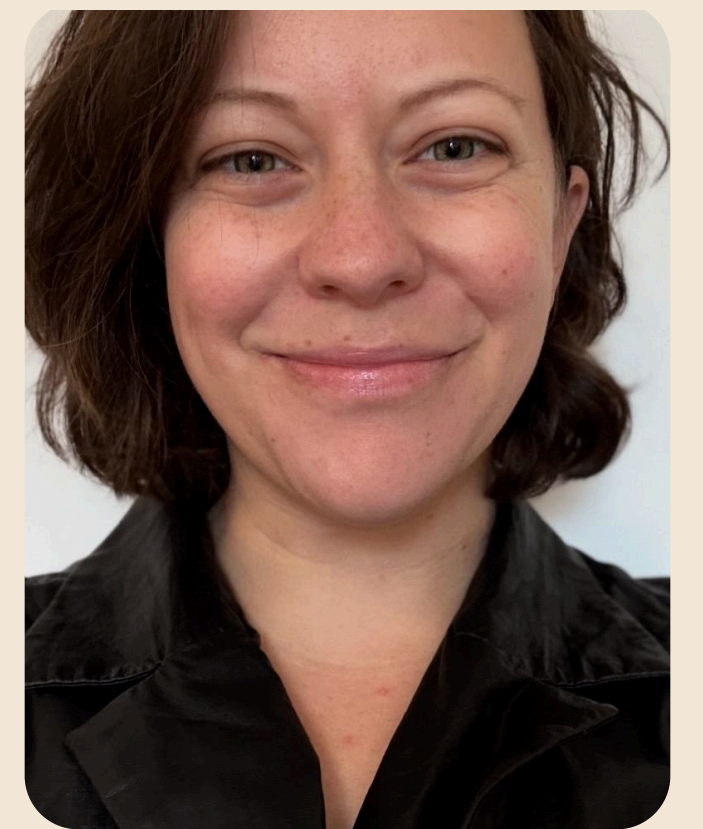
Mark Moseley
Customer Success Lead

20+ years finance, analytics,
product leadership.

2 years developing a
biochar facility



COMPLIANCE



Liz Ernst
Carbon Delivery Lead

7+years LCA and corporate
sustainability experience.

MSc in Sustainable Energy
Science





GRAIN

Building the leading platform
for waste-to-value infrastructure



Ryan Letourneau / CEO:
Ryan@GrainEcosystem.com



Jason Dodier / CCO:
Jason@GrainEcosystem.com

www.grainecosystem.com